

42ND ANNIVERSARY GOOD NEIGHBOR GALA

A silhouette of a city skyline, including several skyscrapers, is centered in the background. The skyline is rendered in a light blue color against a green-to-blue gradient background.

**CHANGING THE
LANDSCAPE**

of Mental Health & Housing

MAY 5, 2016
583 PARK AVENUE
NEW YORK, NY

WE GRATEFULLY ACKNOWLEDGE OUR 2015 GALA LEADERSHIP.

CHAIR

Dan Wurtzel

VICE CHAIRS

Stephen & Carol Chase
Adil & Nandini Nathani
Abbott & Lila Stillman

COMMITTEE

Laura Gould
Diane Louard-Michel
Julie Lowy
Catherine G. Patsos
Beth Zucker



42ND ANNIVERSARY GOOD NEIGHBOR GALA

PROGRAM

Welcome

Stephen H. Chase, Board President, Community Access
Dan Wurtzel, Community Access Board Member and Gala Chair

Video Presentation

Our Community

Cal Hedigan & Alysia Pascaris, Deputy CEOs

Remarks

John Turturro, Emmy Award Winner and Friend of Community Access

Presentation of Awards

by Steve Coe, CEO

Francis Greenburger, Chairman & CEO, Time Equities, Inc.
President & Founder, Greenburger Center for Social and Criminal Justice

Sandra Lowe, Esq.
Lifelong Champion for Social Justice

Participant Remarks

Winnie Freeman

Call for Support

DINNER SERVED

Raffle Winners Announced

42ND ANNIVERSARY GOOD NEIGHBOR GALA

CHAMPIONS

Stephen & Carol Chase
Anastasia Vournas & J. William Uhrig

ADVOCATES

Adil & Nandini Nathani

GROUNDBREAKER

Martha Dabagian & Brendan Driscoll
Dunn Development Corp.
Francis Greenburger
Abbott & Lila Stillman

Dan Wurtzel & FirstService
Residential
Beth & Scott Zucker

BUILDERS

Alembic Community Development
Capital One, N.A.
CMJ Underwriters Ltd.
Direct Energy Business

Laura Gould
Mary M. Massimo, Ph.D.
Richman Housing Resources LLC

Ramesh Shah & Dena Domenicali
think! architecture & design PLLC
Peter L. Woll Architect, P.C.

PARTNERS

Aggressive Heating
Chicago Title Insurance Company
Elise Chowdhry
Citi Community Capital
Columbia Omnicorp
CTA Architects, P.C.

Empire BlueCross BlueShield HealthPlus
Enterprise Community Partners
IRL Systems, Inc.
Chris Lacovara & Sam Green
Julie & Israel Lowy
Mega Contracting Group

Monadnock Construction, Inc.
U3 Advisors
USI Insurance Services
VoiceNEXT, Inc.
Carol Whitcomb
Howard L. Zimmerman Architects, P.C.

GOOD NEIGHBORS

ABBA Realty Associates
Ace Endico
BankUnited
BDO USA, LLP
Braverman Greenspun, P.C.

Laura Gentile
Goldberg Weprin Finkel Goldstein LLP
James Golden
Dr. Cynthia B. Green & Lee Cohen
Harden + Van Arnam Architects PLLC

Hirschen Singer & Epstein LLP
JMA Consultants, Inc.
Joele Frank, Wilkinson Brimmer Katcher
JPMorgan Chase Bank, N.A.
Catherine G. Patsos
Pearlgreen Corporation

Philadelphia Insurance
Companies
Planned Companies
Seyfarth Shaw LLP
Sterling National Bank
VDA



**42ND ANNIVERSARY
GOOD NEIGHBOR GALA**



**HEARTFELT THANKS TO
OUR SPONSORS**

CHAMPIONS

Stephen & Carol Chase

Anastasia Vournas & J. William Uhrig





**42ND ANNIVERSARY
GOOD NEIGHBOR GALA**

HEARTFELT THANKS TO OUR SPONSORS

ADVOCATES

Adil & Nandini Nathani

GROUNDBREAKER

Martha Dabagian & Brendan Driscoll

Dunn Development Corp.

Francis Greenburger

Abbott & Lila Stillman

Dan Wurtzel & FirstService Residential

Beth & Scott Zucker



42ND ANNIVERSARY
GOOD NEIGHBOR GALA

HEARTFELT THANKS TO
OUR SPONSORS

BUILDERS

Alembic Community Development

Capital One, N.A.

CMJ Underwriters Ltd.

Direct Energy Business

Laura Gould

Mary M. Massimo, Ph.D.

Richman Housing Resources LLC

Ramesh Shah & Dena Domenicali

think! architecture & design PLLC

Peter L. Woll Architect, P.C.



**42ND ANNIVERSARY
GOOD NEIGHBOR GALA**

**HEARTFELT THANKS TO
OUR SPONSORS**



PARTNERS

Aggressive Heating

Chicago Title Insurance Company

Elise Chowdhry

Citi Community Capital

Columbia Omnicorp

CTA Architects, P.C.

Empire BlueCross BlueShield HealthPlus

Enterprise Community Partners

IRL Systems, Inc.

Chris Lacovara & Sam Green

Julie & Israel Lowy

Mega Contracting Group

Monadnock Construction, Inc.

U3 Advisors

USI Insurance Services

VoiceNEXT, Inc.

Carol Whitcomb

Howard L. Zimmerman Architects, P.C.





**42ND ANNIVERSARY
GOOD NEIGHBOR GALA**

**HEARTFELT THANKS TO
OUR SPONSORS**

GOOD NEIGHBORS

ABBA Realty Associates

Ace Endico

BankUnited

BDO USA, LLP

Braverman Greenspun, P.C.

Laura Gentile

Goldberg Weprin Finkel

Goldstein LLP

James Golden

Dr. Cynthia B. Green & Lee Cohen

Harden + Van Arnam Architects PLLC

Hirschen Singer & Epstein LLP

JMA Consultants, Inc.

Joele Frank, Wilkinson Brimmer Katcher

JPMorgan Chase Bank, N.A.

Catherine G. Patsos

Pearlgreen Corporation

Philadelphia Insurance Companies

Planned Companies

Seyfarth Shaw LLP

Sterling National Bank

VDA





Community Access houses nearly 1,500 individuals and families in 20 buildings throughout Manhattan, Brooklyn, and the Bronx. Our crisis respite center, pictured here, is among our newest initiatives – offering a home-like alternative to emergency hospitalization, it's the first of its kind in NYC.

ABBOTT & LILA STILLMAN

and their entire family extend their thanks to Community Access and all of its participants and supporters for doing the hard work that sometimes goes unappreciated but is so important as a shining example of how to make a positive difference in the world.

We are grateful that we are able to contribute in a small way to these efforts.

alembic

COMMUNITY DEVELOPMENT

Congratulates

Community Access

On its

42nd Anniversary Good Neighbor Gala

And celebrates our partnership in

Changing the Landscape

For Mental Health and Housing



Making a Difference.
Every Day.



FirstService
RESIDENTIAL

FirstService Residential
salutes

Community Access

for making a difference
for people with
psychiatric disabilities
in New York City

FirstService Residential
212.634.8900
www.fsresidential.com

**Congratulations to
tonight's honorees
and to the entire
Community Access
community.**

**I'm proud to support
an organization that
empowers so many to live
healthy, productive lives
in homes of their own.**

Laura Gould

Congratulations to this year's honorees, Francis Greenburger and Sandy Lowe.

Your tireless work on behalf of basic human rights for New Yorkers inspires all of us.

Mary Massimo



HALSTEAD  PROPERTY®

Congratulations

to

Community Access

on providing 42 years of homes,
hopes and futures



NANDINI NATHANI

Licensed Real Estate Salesperson

Halstead Property, LLC

408 Columbus Avenue, NY, NY 10024

t: 212.381.2638 ■ c: 917.541.6906

nnathani@halstead.com

Congratulations to Community Access

for

Forty-Two Years of Service

Peter L. Woll Architect, PC



The Balton - Manhattan, NY

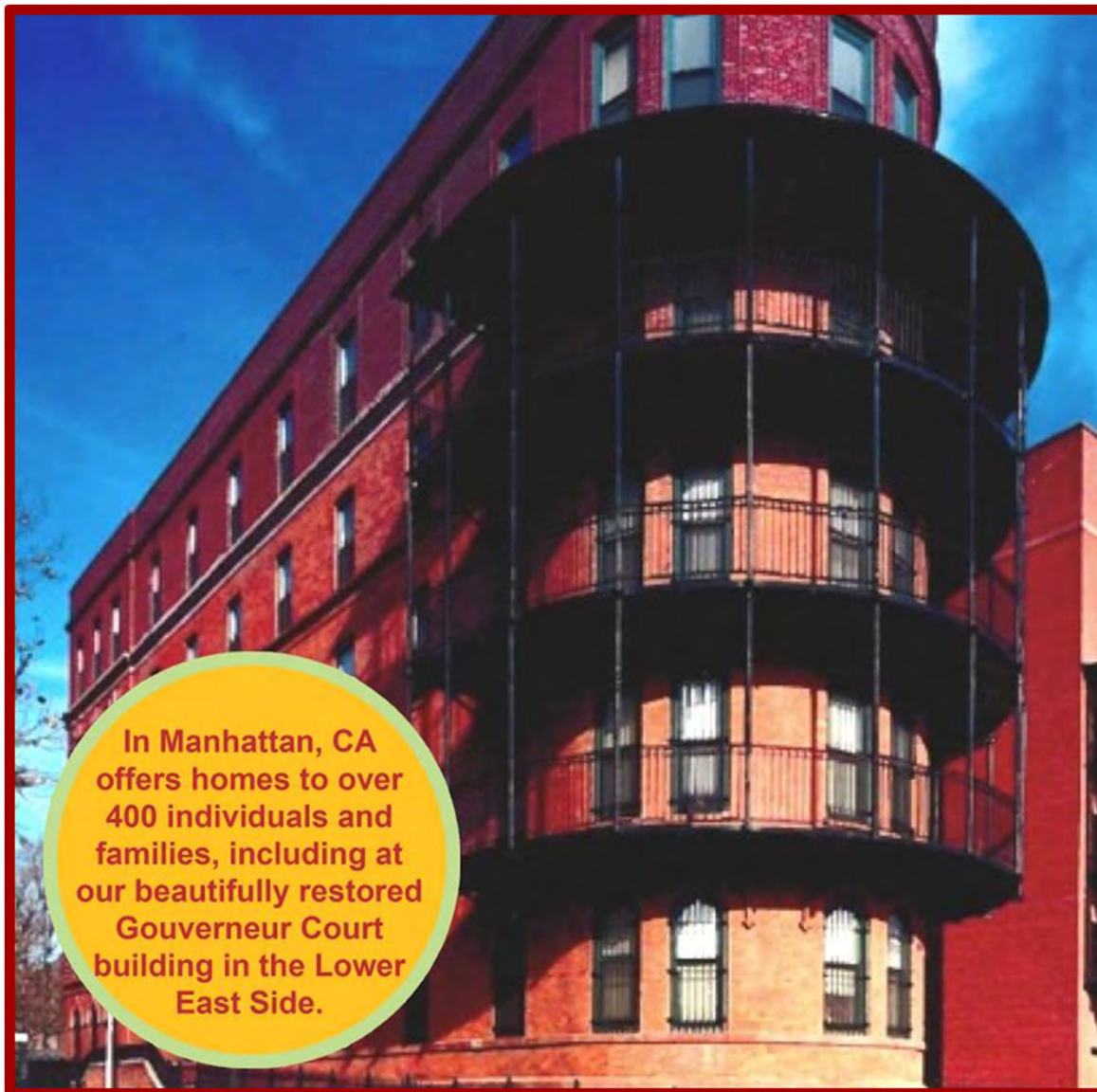
AMERICA'S #1 TAX CREDIT EQUITY SPONSOR.

The trust, stability and service of private owner management.

Developer • Asset Manager • Property Manager • Mortgage Lender



Greenwich 800.333.3509 • New York 212.938.0499 • Chicago 847.562.9400 • Boston 617.305.2025 • Portland 800.425.9503
Washington, D.C. 703.349.2480 • Columbus 740.321.1355 • Denver 303.442.9400 • TheRichmanGroup.com



**In Manhattan, CA
offers homes to over
400 individuals and
families, including at
our beautifully restored
Gouverneur Court
building in the Lower
East Side.**



REALTY ASSOCIATES, INC.

ABBA REALTY

SALUTES THE ENTIRE TEAM
AT COMMUNITY ACCESS
FOR THEIR DEDICATION TO
SUCH A WORTHY CAUSE

ACE

ENDICO

80 International Blvd.

Brewster NY 10509

Cell 917.270.1443

914.347.3131

718.665.2913

fax 718.665.2917

email sttrimarchi@aceendico.com

www.AceEndico.com

Sandy Trimarchi

Account Executive

food service specialists



Aggressive Energy
 committed to energy
 committed to NYC

At Aggressive Energy, we're striving to power New York with affordable fuel oil, biofuels, natural gas and electricity. In addition to our competitive prices, we're committed to our customers and have been offering reliable energy service for more than 30 years. As a leading energy supplier in New York, we promise to uphold our premium service while doing what's right for our environment and our economy.

We keep New York in the comfort zone.



Bill Jebaily
 Bill@aggressiveny.com
 718.836.9222

Lea Pi
 leapi@aggressiveny.com
 917.279.8919

aggressiveny.com



AM
ABIGAILMICHAELS
 CONCIERGE

American Leisure would like to congratulate Francis Greenburger and Sandra Lowe on being honored at Community Access' 42nd Anniversary Good Neighbor Gala!

Wendy Bosalavage
 Michael Fazio
 Mitch Friedlander
 Tom Johnston
 Abbie Newman





Atlantic
tomorrowsoffice.com

Is proud to partner with



On Their 42nd Anniversary Good Neighbor Gala

Honoring Francis Greenburger

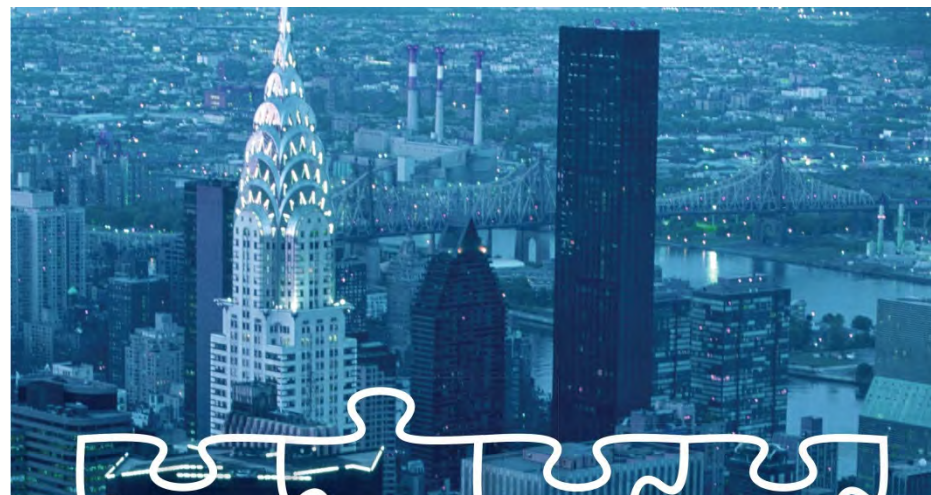
For Their Legacy of Service, Leadership, and Commitment to Our Communities.



914-674-4500
tomorrowsoffice.com

Serving over 20,000 customers in
New York, New Jersey, Connecticut, Delaware Valley,
Greater Philadelphia & Lancaster Region, PA

Atlantic, Tomorrow's Office is the region's premier provider of Imaging, Document Management, Managed IT Solutions, and Atlantic Cloud Workspace™. Atlantic delivers comprehensive End-to-End Technology Solutions to meet tomorrow's office challenges.



**HELPING BOARDS PUT TOGETHER
ALL THE PIECES OF THE PUZZLE**

BRAVERMAN | GREENSPUN

A PROFESSIONAL CORPORATION

BRAVERMAN GREENSPUN, P.C. | 110 EAST 42ND STREET, NEW YORK, NY 10017
(212) 682-2900 | WWW.BRAVERLAW.NET





**BTQ Financial is
Proud to Support
Community Access
42nd Anniversary
Good Neighbor Gala**

BTQ Financial is a national leader in providing financial and accounting outsourcing solutions to the nonprofit sector.

Your Mission is to Create a Better World.

Ours is to Help.

www.btqfinancial.com



Way to go Community Access!

Capital One® is proud to support **Community Access** at its 42nd Annual Good Neighbor Gala. Congratulations to tonight's honorees, Francis Greenburger and Sandra Lowe. Your efforts are helping to *change the landscape of mental health and housing* in New York and beyond.

capitalone.com/commercial



The third parties listed are not affiliated with Capital One and are solely responsible for their products and services.
©2016 Capital One. Capital One is a federally registered service mark. All rights reserved.

CHICAGO TITLE INSURANCE COMPANY

IS PROUD TO SUPPORT

Community Access

AND JOINS COMMUNITY ACCESS IN CELEBRATING ITS
41st Anniversary Good Neighbor Gala

SPECIAL CONGRATULATIONS
TO

Francis Greenburger
and
Sandra Lowe

Neil A. Falcone & Your Friends at



CHICAGO TITLE
INSURANCE COMPANY

711 Third Avenue, New York, New York
Neil.Falcone@ctt.com Telephone (212) 880-1484

For All Your
Business Needs



o m n i c o r p

14 West 33rd Street
New York NY 10001

TEL: 212-279-6161

www.columbiaomni.com





CONGRATULATIONS!

TO HONOREES

FRANCIS GREENBURGER & SANDRA LOWE

AND TO

COMMUNITY ACCESS

FOR IMPROVING OUR COMMUNITIES





PROUD TO SUPPORT COMMUNITY ACCESS AND THE GOOD NEIGHBOR GALA

Delivering for our customers and our communities
visit business.directenergy.com to learn more



Congratulations to the Community Access 42nd Anniversary Good Neighbor Gala honorees:

Francis Greenburger

Chairman & CEO of Time Equities Inc.
President & Founder of the
Greenburger Center for Social
& Criminal Justice

Sandra Lowe

Lifelong Champion
for Social Justice

Empire BlueCross BlueShield HealthPlus celebrates those who serve others.

www.empireblue.com/ny

Empire BlueCross BlueShield HealthPlus is the trade name of HealthPlus HP, LLC, an independent licensee of the Blue Cross and Blue Shield Association.

ENYMKT-0231-16 04.16



GANFER & SHORE, LLP

Our Continuing Support to Community Access on
the Occasion of the 2016 Good Neighbor Gala

GANFER & SHORE, LLP

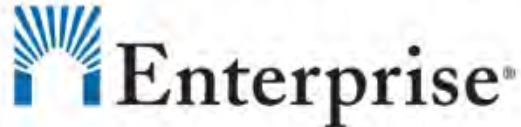
ATTORNEYS AT LAW

360 Lexington Avenue
New York, New York 10017
www.ganfershore.com

To Contact us:
Matthew Leeds
212-922-9071
mleeds@ganfershore.com

We're on a Mission.

Enterprise's generational goal is to end homelessness and ensure that no families pay more than half of their income on housing. We are honored to partner with Community Access to achieve this goal and support them through our programmatic, capital and policy work.



www.EnterpriseCommunity.org



GOLDBERG WEPRIN FINKEL GOLDSTEIN LLP

is proud to honor

DANIEL WURTZEL

**FOR HIS SUPPORT OF
COMMUNITY ACCESS**



GENATT V LLC
INSURANCE SOLUTIONS

**Congratulations to
Community Access**

And best wishes to
Dan Wurtzel
and
David Kuperberg

Michael Genatt
Richard Genatt
Genatt V LLC



HIRSCHEN SINGER
& EPSTEIN LLP

IS PROUD TO SUPPORT
COMMUNITY ACCESS

HIRSCHEN SINGER & EPSTEIN LLP
902 Broadway | 13th Floor | New York, NY 10010
212.819.1130 | www.hirschensinger.com

Congratulations
to all of tonight's
honorees

**Cindy Green
and Lee Cohen**







Congratulations,
Sandra Lowe,
our Caped Crusader

We Love You Because You Push Us!

Love and Admiration
from
Laura
and Gentile & Associates

Congratulations

To

Community Access

And to its 2016 honorees

Francis Greenburger

Sandra Lowe

MONADNOCK
CONSTRUCTION, INC.



Planned Companies

Janitorial ▪ Maintenance ▪ Security ▪ Concierge

Planned Companies is an industry leading real estate service organization, providing Janitorial, Maintenance, Security Guard Services and Concierge Solutions throughout the Northeast and Mid-Atlantic regions. With more than 100 years of experience, Planned knows how to deliver unparalleled consistency, accountability and quality service.

Planned Companies' portfolio consists of over 500 clients, with operations currently in six (6) states – Connecticut, New York, New Jersey, Pennsylvania, Maryland, Virginia and the District of Columbia. Rather than turning to several Janitorial, Security and Concierge companies, customers can count on one company for quality service across the board.

JANITORIAL / MAINTENANCE



- Janitorial & Maintenance Services
- Floor & Carpet Maintenance Programs
- Porters & Matrons
- Handymen & Handy Porters
- Building Superintendents
- Post-Construction Clean-Up
- Building Engineers
- 24/7 Emergency Specialists

CONCIERGE / FRONT DESK



- Concierge
- Front Desk Personnel
- Doormen
- Package Assistance
- Personalized Concierge Service
- Planned Direct
- 24/7 Emergency Specialists

SECURITY



- Residential and Retail Security
- Corporate and Commercial Security
- Mobile and Foot Patrols
- Fire Watch for Construction Sites
- Special Events Security
- Security Safety & Awareness Seminars
- Planned Access 24

888.706.8600

www.plannedcompanies.com

SEYFARTH SHAW



**Breadth.
Depth.
Results.**

www.seyfarth.com
Attorneys at Law



The logo for USI, consisting of the letters "USI" in a bold, white, sans-serif font, enclosed within a white rounded rectangular border. A registered trademark symbol (®) is located to the right of the border.

USI®

congratulates tonight's honorees
and is proud to support
Community Access

voice ***NEXT***



your next phone company

(888) 369-NEXT (6398)

*Congratulations to the
honorees and Thank You
Community Access for making
NYC a better place to live.*





**In Brooklyn,
over 100 individuals
are a part of our
community, including
tenants at our Dekalb
Avenue building.**



7001 Brush Hollow Road
Suite 212
Westbury, NY 11590
516-334-5996

- ✓ IT Consulting
- ✓ Network Design, Implementation & Maintenance
- ✓ Application Development, Implementation & Training
- ✓ Support

U3 ADVISORS

CONGRATULATIONS TO
THIS YEAR'S HONOREES

WE ARE PROUD TO
CONTINUE TO SUPPORT
COMMUNITY ACCESS





OFFICE 201-816-0448
CELL 917-647-2878
FAX 201-816-0558

JMA CONSULTANTS, INC.

d/b/a JMA OF NEW JERSEY IN N.Y.
JMA Consultants, Inc., NJ Authorization to do Engineering No. 24GA27941400
AFFILIATED WITH JMA CONSULTANTS AND ENGINEERS P.C.
gene@jmabuildings.com E-MAIL

EUGENE F. FERRARA
PRESIDENT

580 SYLVAN AVENUE SUITE 1L
ENGLEWOOD CLIFFS, NJ 07632

Building a Better Tomorrow.

Chase is proud to sponsor the Good Neighbor Gala and we applaud Community Access' four decades of leadership.

For more information on Chase Community Development Banking please contact:

David Walsh
(212) 270-2943

Sharmi Sobhan
(212) 270-2934

CHASE 



© 2016 JPMorgan Chase & Co. All rights reserved. 208634

Proudly support the
Community Access Gala

*Wishing you continued
success throughout 2016!*



PHILADELPHIA
INSURANCE COMPANIES

A Member of the Tokio Marine Group

866.381.0418 | **PHLY.com**



In the Bronx, nearly 500 people are tenants of Community Access, including at our national award winning Cedar Avenue Apartments.

Thank You!

BANKUNITED IS PROUD TO SUPPORT
Community Access

FOR YOUR HUMANITARIAN EFFORTS TO HELP
THOSE IN OUR COMMUNITY IN NEED

 **BankUnited**
We're with you.

  www.bankunited.com

BankUnited, N.A.
Member FDIC



www.centuryelevator.com

(718) 937-6200

We are proud to be part of
Community Access, Inc.'s
commitment to the community
and support their endeavors.

Adam Cole
Healthcare and Not-for-Profit
Services Group
212-885-8327
acole@bdo.com



Proud to give credit to
those who make a
difference.

Congratulations to
Community Access for
providing 42 years of
dedicated and unparalleled
leadership for people living
with mental health concerns.



© 2016 Citigroup Inc. All rights reserved. Citi and Citi
with Arc Design are registered service marks of Citigroup Inc.

HVA



**HARDEN + VAN ARNAM
ARCHITECTS**

**Congratulates
Community Access &
Francis Greenburger on your
great work!**

INTERIOR RESOURCES
Contract Furniture & Design

We proudly support **Community Access**
in helping to build homes, hopes and
futures for New Yorkers overcoming
mental illness and homelessness.

t: (800) 397-7776

www.interiorresourcesusa.com

Congratulations to
this year's Honorees!

HLZA HOWARD L.
ZIMMERMAN
ARCHITECTS PC

Exterior Restoration | Historic Preservation
Forensic Investigation | Mechanical Engineering

Continued Success to
Community Access

From all of us at



Fire Alarm ~ Card Access
CCTV ~ Security Systems
(718) 491-0642



PRO-TECH
PLUMBING AND HEATING CORP.

*Congratulations to
all of tonight's honorees*

PRO-TECH PLUMBING & HEATING CORP.
Phone: (718) 767-9067 Fax: (718) 767-9219
www.protech-plbg.com



Expect extraordinary.

Ray Guanlao
Senior Managing Director
rguanlao@snb.com
snb.com

*Proud to support
Community Access and Dan Wurtzel*

SPERBER DENENBERG & KAHAN, PC
Attorneys at Law

48 West 37th Street, 16th Floor
New York, NY 10018
(917) 351-1335

www.sdkpc.com
ekahan@sdkpc.com

VDA Proudly Supports the Community Access 42nd Anniversary Good Neighbor Gala

Contact us to see how we can help with
your vertical transportation needs.

VDA (Van Deussen & Associates)
contact@vdassoc.com
888-994-9220 | www.vdassoc.com



The Plaza Hotel



ONE57



Hearst Tower

